

Proposal  
for a  
Downtown Riverfront  
Master Plan

The Late Bloomers Garden Club  
is a local Garden Club

Devoted to beautifying Jacksonville  
for decades

horticulture

conservation

civic improvement

education

We are also one of over 200 garden clubs

that are members of the

Garden Club of America (GCA)

# Moving A Highway to create a Park in the Center of Greenville, Sc



Falls Park, Greenville, SC

Image via fallspark.com

# Greenville, SC

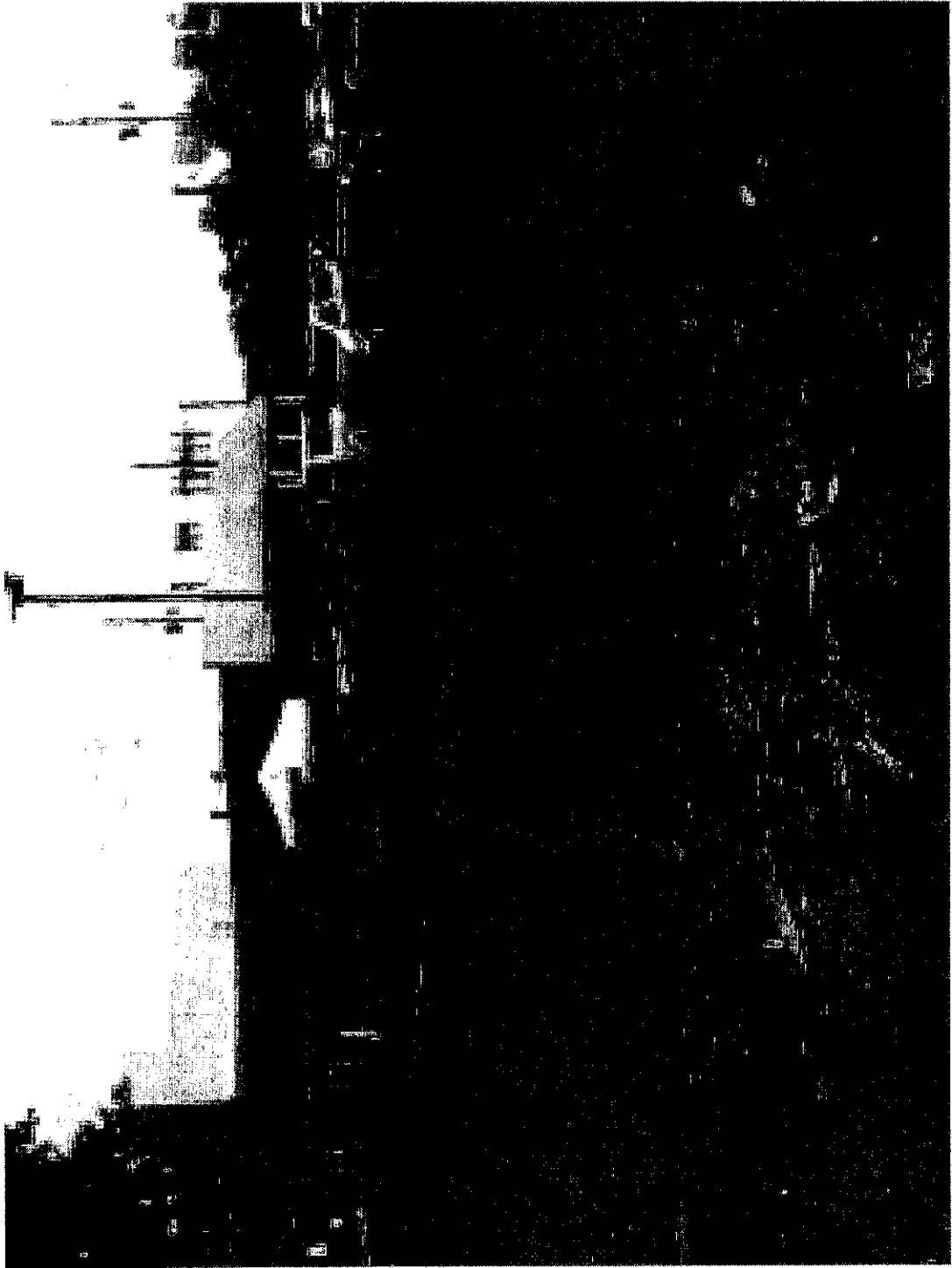
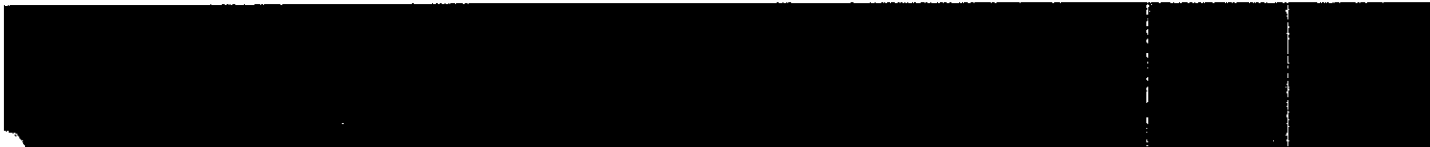


Falls Park, Greenville, SC

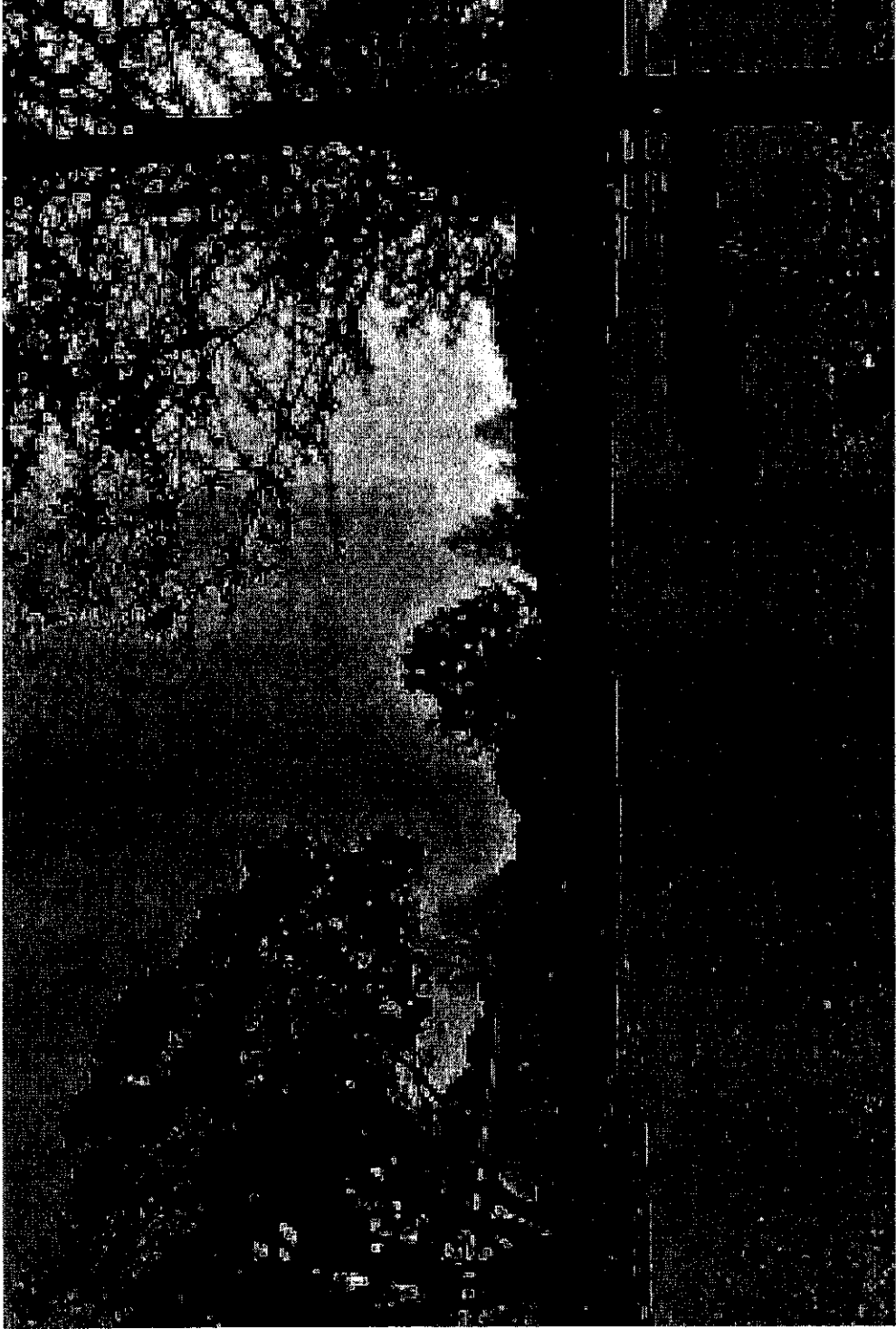
Image via fallspark.com

# Turning a barren acre in the center of Jacksonville's Gateway Services





# Into a hope-giving Park





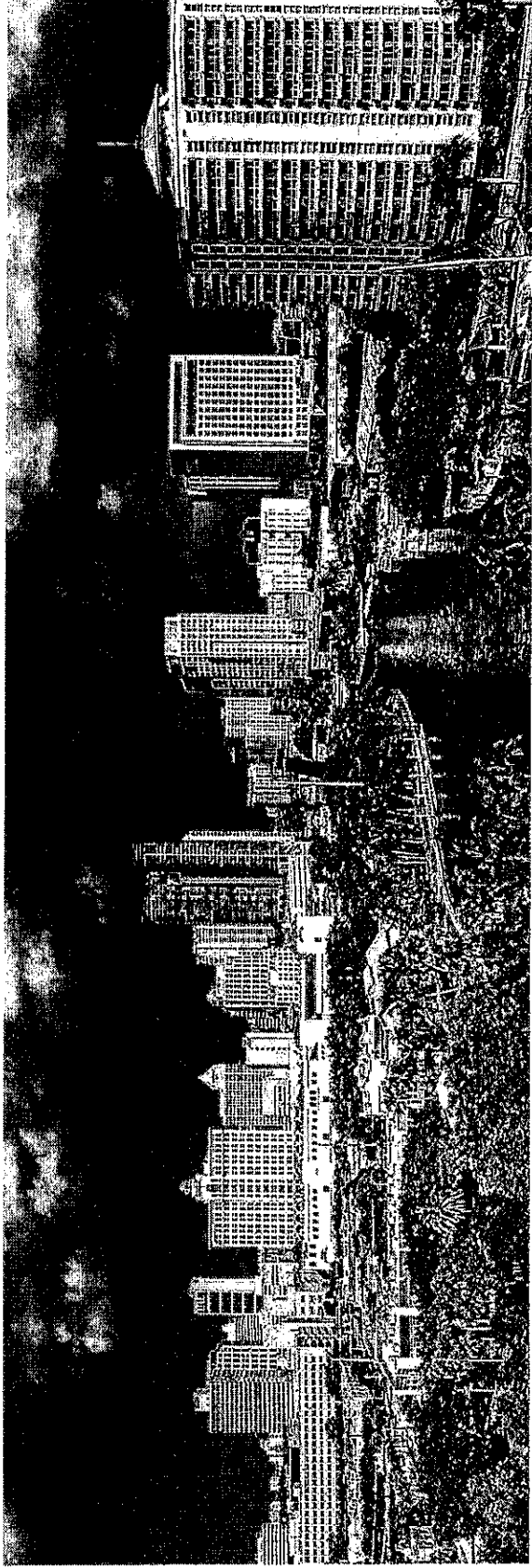


In our research, we have discovered

TWO interesting facts:

1. All the great revitalizations that we  
have studied...

# Fort Lauderdale, FL



Ft Lauderdale, FL

Image via Keith Douglas - Greater Fort Lauderdale Alliance

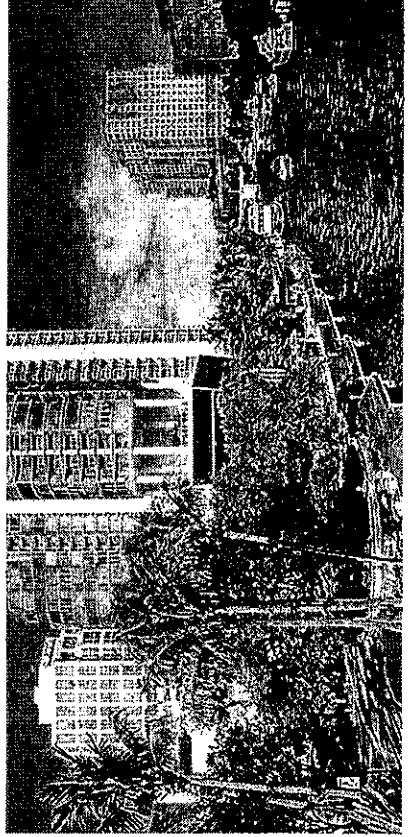
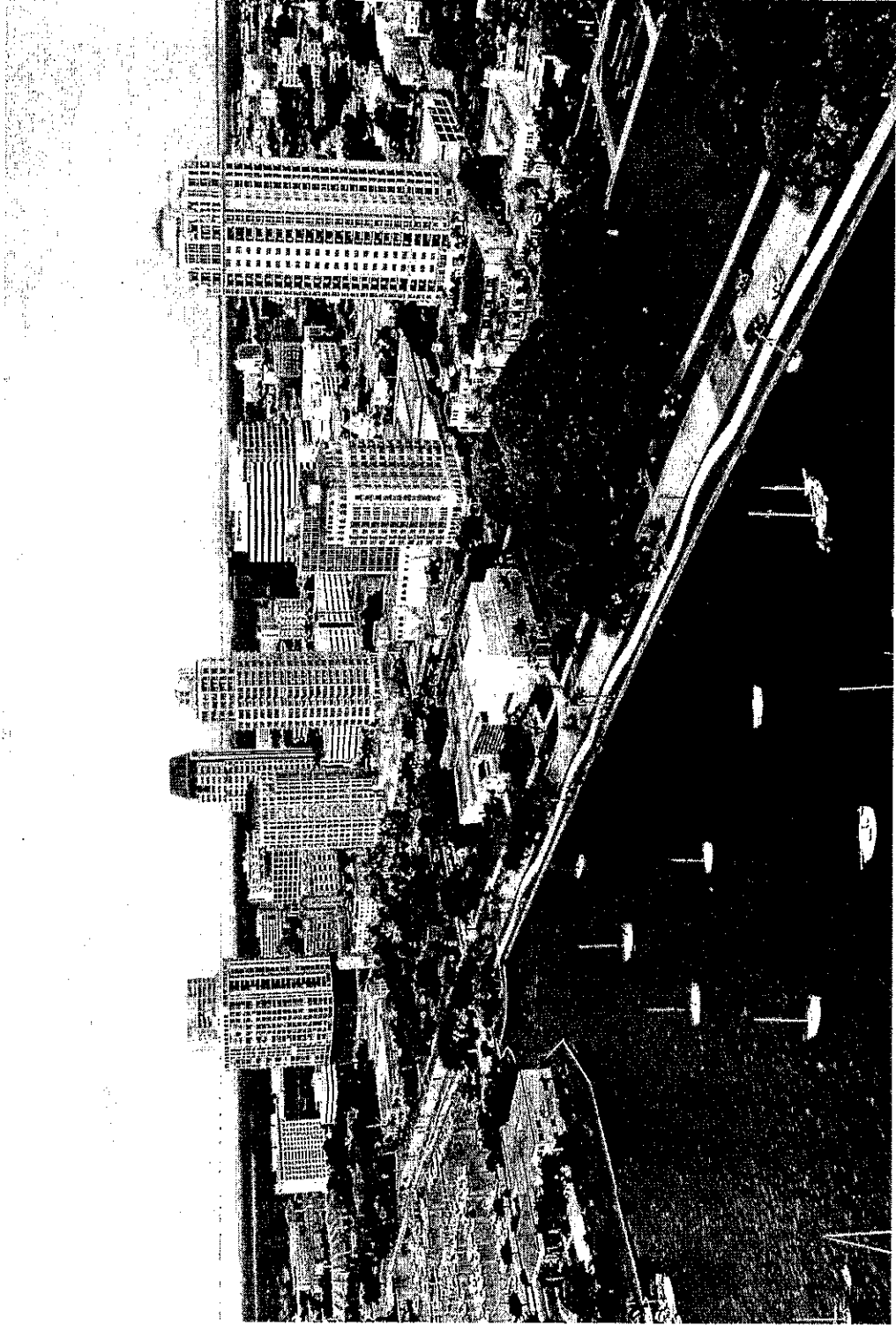
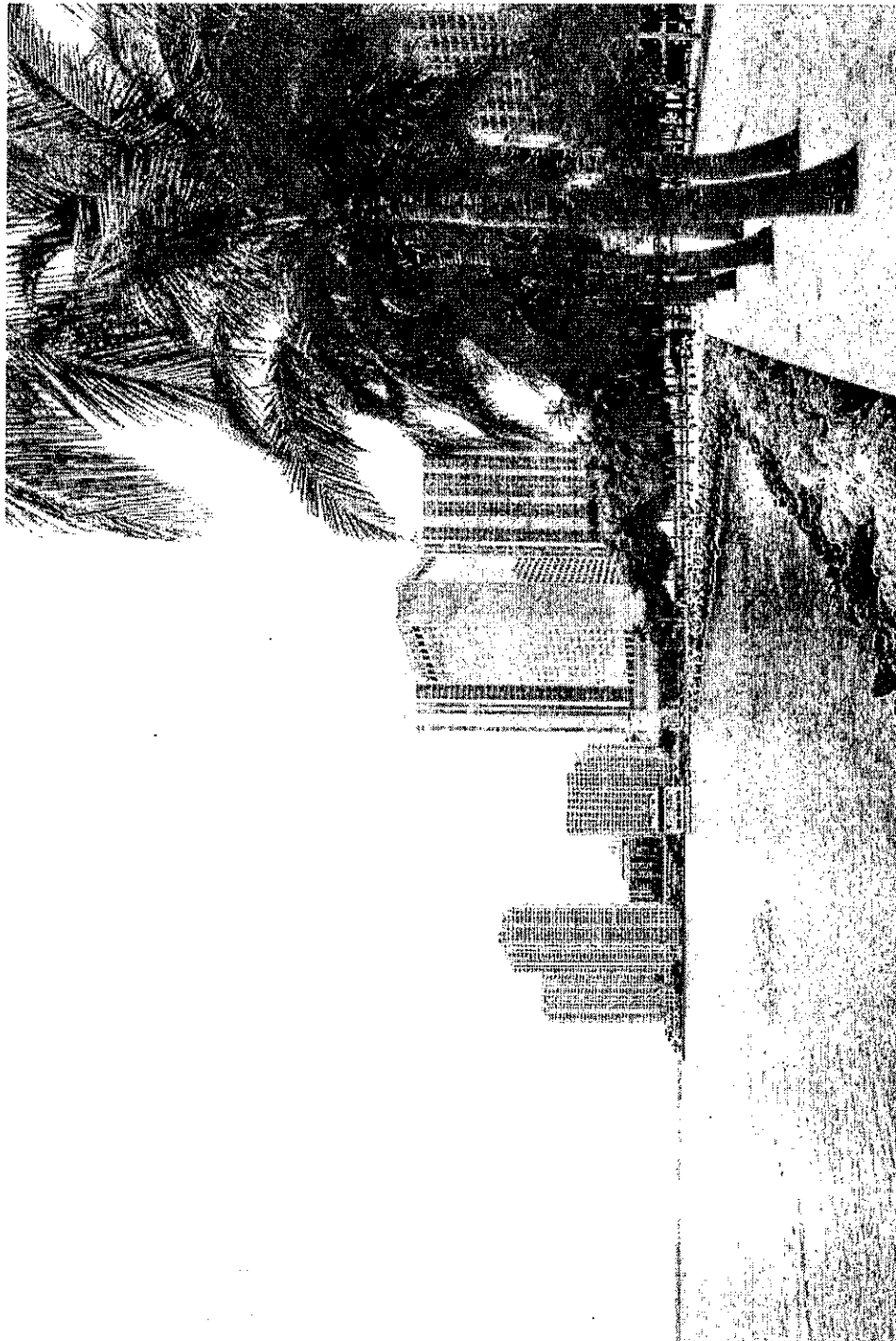


Image via Florida Trend Magazine

# St. Petersburg, FL



# Miami, FL



- 
1. All the great revitalizations  
that we have studied

Have A

WATERFRONT MASTER PLAN

2. All the great revitalizations have a

## MASTER PLAN TASK FORCE

A quote from St. Petersburg :

St. Petersburg's downtown has been rated among the best in the South. The St. Petersburg's Downtown Waterfront is the City's greatest physical asset. The Downtown Waterfront Task Force is focused on establishing a master plan for the City's entire downtown waterfront, from Coffee Pot to Lassing park, which will provide the framework of guiding principles for future decision making. The Downtown Waterfront Task Force is continually searching for bright ideas from experts in their respective fields to provide input in the Downtown Waterfront Master Plan.



# Benefits of a Riverfront Master Plan

Coordinate the unrivaled, vibrant and diverse array of community assets of our downtown riverfront zone into a comprehensive vision.

Create a cohesively designed multiuse open-space, arts and culture, green attractive waterfront amenity, with the St. Johns River as a focal point.

Serve as an economic driver bringing businesses and people downtown to work, play, and live, creating a resurgence of urban life downtown.

Provide a framework of guiding principles for future decision making and avoid the current practice of “silo” development.

# Where is Jacksonville Today?



(

(

(

# EXHIBIT A-Aerial View Mandarin Boat Ramp



COLLECT LIVE, AERIAL VIEWS OF LOCATIONS YOU WANT TO MONITOR WITHIN THE RANGE OF OUR SERVICE. ABOUT  
THE JAX READY SERVICE: JAX READY IS A SERVICE THAT PROVIDES YOU WITH AERIAL VIEWS OF YOUR LOCATION  
YOUR LOCATION. CONTACT US AT 1-800-368-7273 OR VISIT US AT [WWW.JAXREADY.COM](http://www.jaxready.com).  
Return Home

Track times with JaxFerry

# EXHIBIT B



# EXHIBIT B



# EXHIBIT C

- View of river from existing kayak launch on shoreline facing south





## EXHIBIT C

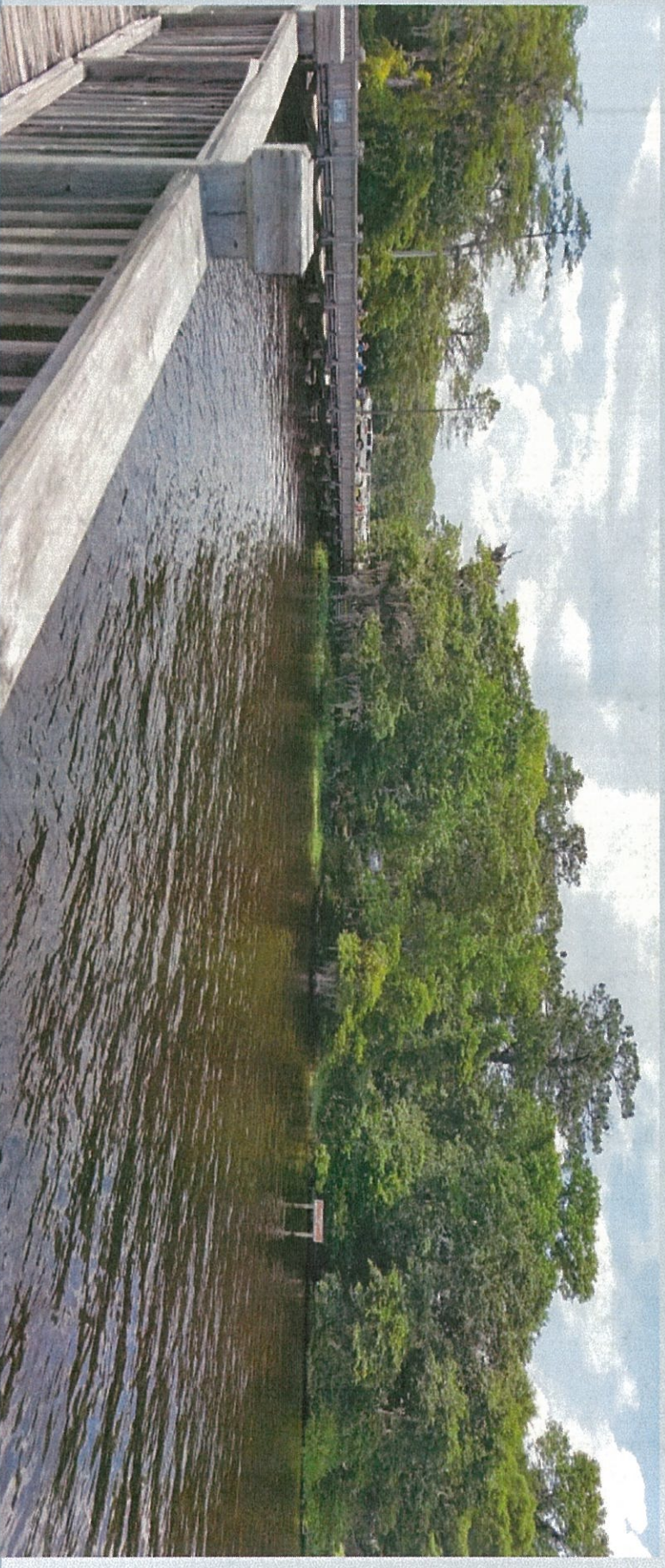


- View of entrance of existing launch looking west towards boat ramp



# EXHIBIT C

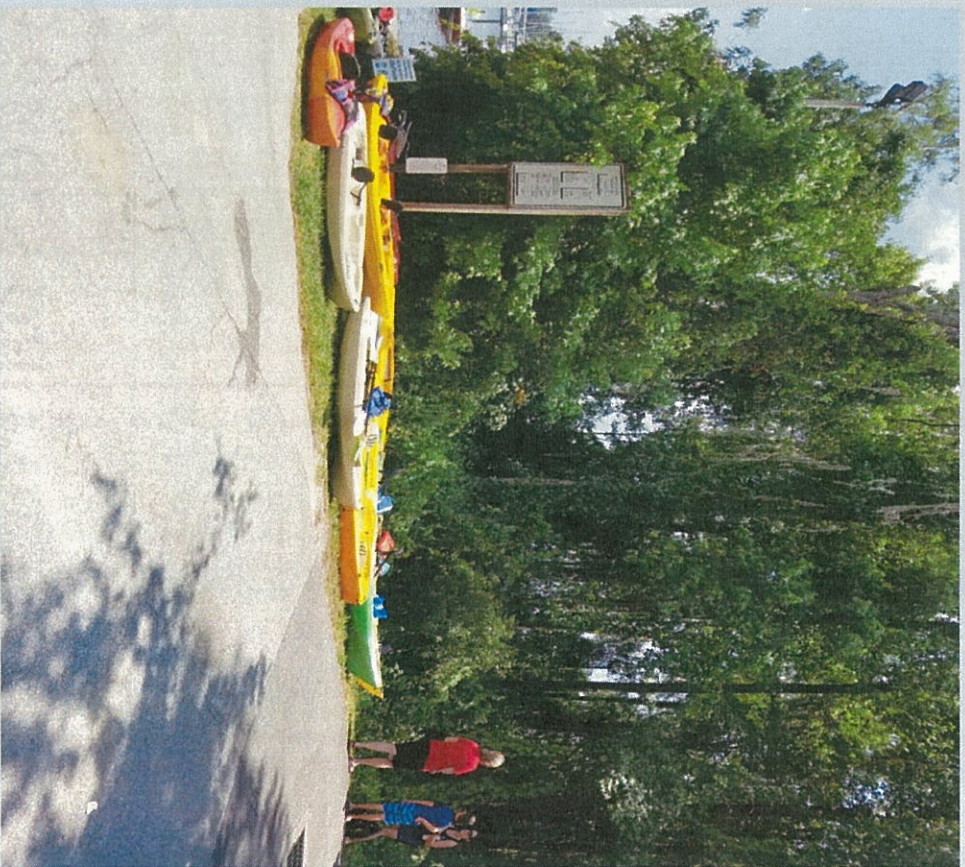
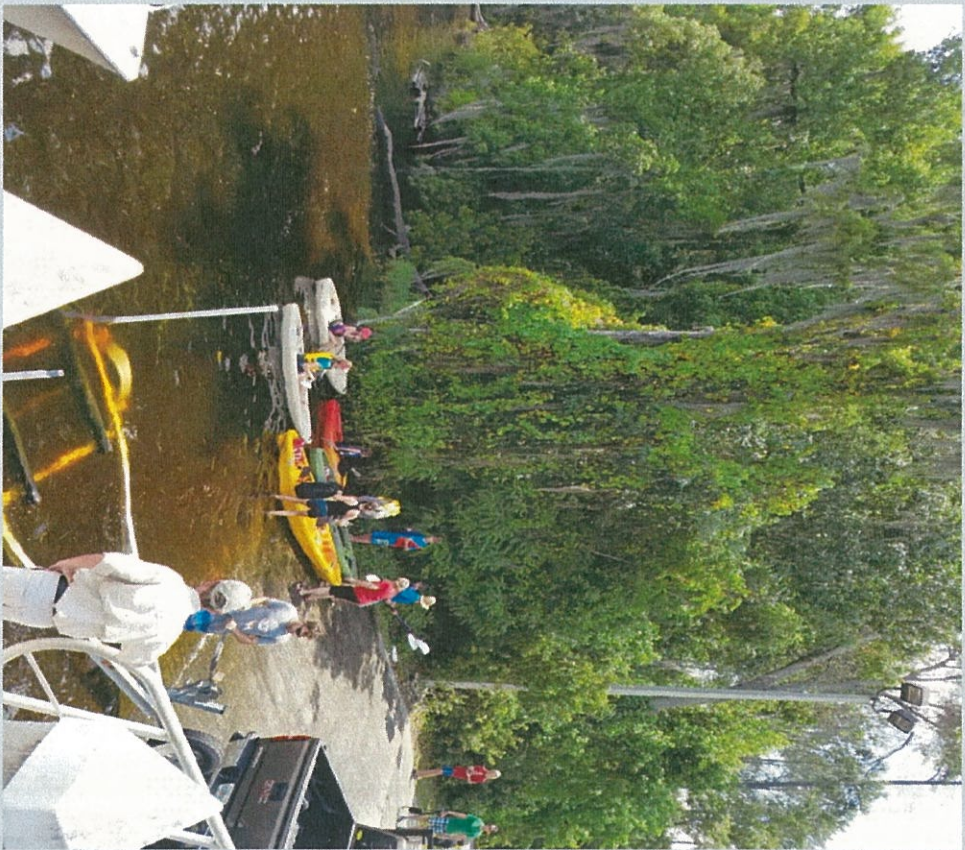
- View of existing shoreline launch from dock looking north



# EXHIBIT D-Kayakers on Port



# EXHIBIT E-Kayakers on Ramp





# EXHIBIT F

## Examples of Sailboats

# Hansa 303

EXHIBIT F

*The 303 is fun, safe, stable and easy to sail for one or two people*

Like the smaller 2.3, the 303 Wide and Breeze models can be sailed by one or two persons. However they have two sails, an increased carrying capacity and are well suited to more lively sea conditions. Ideal for novices with or without an on-board coach, for fun recreational sailing and club racing. The 303 is an ISAF Class with almost 1,000 boats being sailed in more than 25 countries.

#### Easy to Sail

- Simple to use joystick steering
- Forward facing seat for comfort
- Responsive and manoeuvrable
- Easy to assemble and launch

#### Safe & Stable

- Weighted centreboard for stability
- Low centre of gravity seat position
- Adjustable sail area

#### Options

- Six deck & sail colours
- Keel lifter
- Shore shuttle
- Boat and sail covers

#### Specifications

Length	3.03 m
Beam	1.35 m
Draft	1.0 m
Weight	55 kg + centreboard 30 kg
Sail Area	5.8 m <sup>2</sup> (Reduces to 0.5 m <sup>2</sup> )
Mast	Main - Unstayed 4.75 m
Capacity	Jib - Unstayed 2.85 m
	160 kg



[www.hansasailing.com](http://www.hansasailing.com)

(

(

(

Florida Inland Navigation District 2016  
June Update

Project Name	Project Description	Grantor Award	COJ Match	Total Award	Status
<b>END 2013 Grants</b>					
Exchange Island	Design/permit of small boat dock, shoreline kayak area, hiking trail, pavilions with tables and grills	\$52,380	\$63,380	\$115,760	Project complete.
Sisters ICW Dock Redesign	Design/permit for relocating pilings and docks	\$33,380	\$37,380	\$70,760	Project complete.
Ortega Channel Markings	Install channel markers	\$14,300	\$19,300	\$33,600	Project complete.
County Road Boat Ramp	Design/permit new boat ramp for hand launch boats; remove pilings	\$41,760	\$50,760	\$92,520	Project complete.
Northbank Riverwalk Bridge	Design/permit to remove bridge and reroute Riverwalk; add kayak launch	\$36,000	\$44,000	\$80,000	Project complete.
Northshore Kayak Launch	Design/permit kayak launch area with ADA access	\$26,100	\$32,600	\$58,700	Design at 60%. Waiting on permits.
Blue Cypress Boardwalk Extension	Design/permit boardwalk extension to connect to Arlington Lions Club	\$36,420	\$44,420	\$80,840	Project complete.
Lighting at ICW Boat Ramp	Install lights at ICW BR around ramp and associated parking area	\$67,750	\$74,250	\$142,000	Project complete.
Lighting at Sisters Creek Boat Ramp	Install lights at Sisters Creek BR around ramp and associated parking area	\$69,680	\$76,180	\$145,860	Design complete. Construction to begin in July.
Charles Reese BR - Dock	Design/permit of fishing dock & kayak launch	\$40,500	\$48,000	\$88,500	Design at 60%. Waiting for permits.
Fishing Creek Dredging	Dredging of Fishing Creek	\$209,250	\$240,750	\$450,000	Project complete.

1  
,  
3

(

(

(



Florida Inland Navigation District 2016

June Update

FINID 2013 Grants continued	Grantor Award	COJ Match	Total Award	Status
Half Moon Island Boat Ramp	\$22,475	\$27,725	\$50,200	Design at 60%. Permit received.
Half Moon Island Park Development	\$42,475	\$47,725	\$90,200	Design at 60%. Permit received.
<b>FINID 2014 Grants</b>				
Exchange Club Island	\$113,250	\$135,900	\$249,150	Out for bids.
Northbank Riverwalk	\$71,400	\$85,680	\$157,080	Bid documents being prepared.
Blue Cypress Boardwalk Extension	\$105,750	\$126,900	\$232,650	Construction underway.
<b>FINID 2015 Grants</b>				
Pottsburg Creek Dredge	\$385,812	\$462,974	\$848,786	Bid documents being prepared.
Sisters ICW Dock Relocation	\$139,524	\$167,429	\$306,953	Bid documents being prepared.
County Road Boat Ramp	\$62,615	\$75,138	\$137,753	Bid documents being prepared.
Mayport Boat Ramp Lane Extension	\$99,000	\$118,800	\$217,800	Bid documents being prepared.
Metro Park Dock Replacement	\$96,750	\$116,100	\$212,850	Meeting with design consultant.
Joe Carlucci Dock Extension	\$46,500	\$55,800	\$102,300	Meeting with design consultant.
Wayne B. Stevens Dock Replacement	\$60,500	\$72,600	\$133,100	Pursuing quotes.
Tillie Fowler Kayak Launch	\$46,000	\$55,200	\$101,200	Meeting with design consultant.

